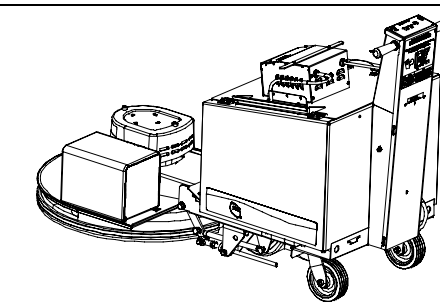
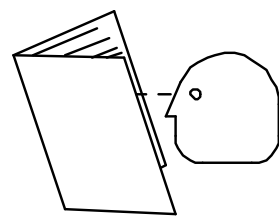


Charger 2717 DB Battery Burnisher

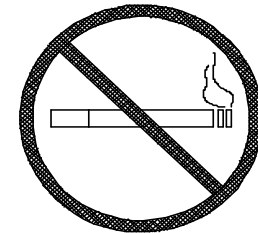
Operation, Maintenance and Safety Instructions



WARNING: Failure to observe these instructions can cause personal injury to machine operator or bystanders.



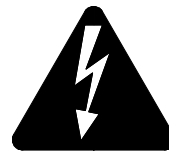
Read and understand all instructions in Operation Manual prior to using machine. Review use and care video prior to operating the machine.



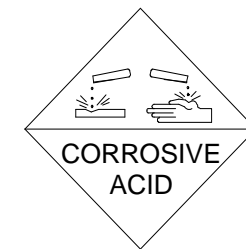
WARNING: Batteries emit hydrogen, which can cause fire or explosion. Never smoke, light a match, or cause a spark during operation or charging. ALWAYS charge in a well-ventilated area away from open flame.



Poison. Causes severe burns. Avoid contact.



Shock or electrocution hazard.



Batteries Contain Acid. Avoid Contact. IF CONTACT WITH BATTERY ACID OCCURS, follow these instructions:

- **SKIN** – Rinse area with water.
- **EYES** – Flush with water for 15 minutes.
- **INTERNAL** – Drink water or milk. Follow with Milk of Magnesia, beaten egg or vegetable oil. Call a physician immediately.



ALWAYS wear eye protection, rubber gloves, and protective clothing to avoid contact with battery acid.

Battery Charging

- The master power switch and all other switches must be turned OFF.
- Recharge batteries at end of every shift, when indicated by battery meter, or anytime the machine is not in use.
- Connect the battery charger power cord into the battery charger then into a grounded A.C. outlet of the proper voltage.
- After a few seconds the display on the battery charger will indicate the battery charger is operating.
- If the battery charger will not start operating, check the charging plug connections and the battery cable connections.
- See Operation manual for charging batteries.

Daily Maintenance

- Charge batteries daily or as needed.
- Inspect battery liquid level, add water only to adjust to proper level as needed.
- Check all battery terminal and cable connections. Clean and tighten as needed. Loose connections are dangerous and can cause personal injury and machine damage.
- Empty the filter bag when it is one-half (1/2) full.

Weekly Maintenance (20 Hours)

- Inspect Flexiwall shield for damage - dents, cracks, and wear. Remove dirt build up from brush.

Monthly Maintenance (100 Hours)

- Drain all liquids from battery compartment. Dispose of according to local and federal regulations.
- Inspect all fasteners (bolts, screws, nuts) at mechanical linkages, pivot points and ball joints for tightness. Tighten as needed. Repair or replace any worn or damaged components.
- Clean body components to remove chemical and liquid residue to maintain a "like new" appearance.
- Equalize the batteries.
- See Operation manual for charging batteries.

Quarterly Maintenance (300 Hours)

- Check and tighten chain as required.
- Lubricate casters and drive bearings.
- Tighten and lubricate linkages and pivot points.

Every 6 Months (600 Hours)

Call your local authorized service center for service station to have the following services performed.

- Inspect Brush Motor carbon brushes for wear. Replace when carbon brushes measure 1/2" or less. Failure to replace carbon brushes will cause poor performance and possible motor damage.
- Check the condition of the batteries. The condition of a battery may be checked by using a Hydrometer to check the specific gravity (strength) of the acid in each cell after they have been charged.

Every 12 Months (1200 Hours)

Call your local authorized service center for service station to have the following services performed.

- Inspect Drive Motor carbon brushes for wear. Replace when carbon brushes measure 1/2" or less. Failure to replace carbon brushes will cause poor performance and possible motor damage.

For assistance contact your local NSS authorized distributor or NSS factory headquarters (888) 927-4677

NSS @ Enterprises, Inc.
3115 Frenchmens Road, Toledo, Ohio 43607
PHONE (419) 531-2121 FAX (419) 531-3761
NSS @ Enterprises, Inc. European Distribution Centre
Unit II, Pinfold Trading Estate * 55 Nottingham Road
STAPLEFORD, NOTTINGHAM NG9 8AD ENGLAND U.K.
PHONE: (44) 0115 939 1568 * FAX: (44) 0115 949 0615

Please note that the machines' specifications and appearances contained herein are subject to change without notice. Contact your NSS representative for the latest information on specific models.

9092732 Charger 2717 DB Maintenance Poster Orig. 05-07 Rev B 02-12

OPERATION COMPONENTS

Twist Grip
Controls variable speed forward and reverse and turns the pad Motor ON and OFF when the machine is moving.



Battery meter
The machine is on when number is lit. Number indicates level of charge. The higher the number, the greater the charge.

Brush Switch
Turns the brush motor ON and OFF.



Master Switch
Turns the machine ON and OFF.

Circuit Breaker

Hour Meter

Battery Cover Handle

Fuse Holder
Battery Charger

Brush Motor

On Board Charger

Flexiwall Shield

Filter bag

Battery Tray Drain Hose

Raise/Lower Handle
Lift up on the handle to put the machine in pad changing position. Lower handle to put the machine into transport and operating position.

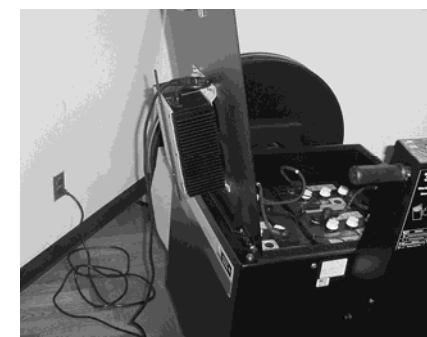
MAINTENANCE

Always turn OFF all machine switches before performing any maintenance or repairs to any equipment.

Daily Maintenance

Charge Batteries

Charge batteries daily or as needed. Charge battery pack with cover open.



Check Water Level

Check water level in batteries after charging. Add distilled water as needed. Check and verify all battery connections are clean and tight.



Change Pad

Change pad after each use. Secure with pad grabber.



Pad Grabber

Failure to install the Pad Grabber tightly may allow the pad to be thrown from the pad driver.



Empty Filter Bag

Empty the filter bag when it is more than one-half (1/2) full.

Weekly Maintenance

Flexiwall Shield

Inspect for damage - dents, cracks or wear. Remove dirt build up from brush.



Monthly Maintenance

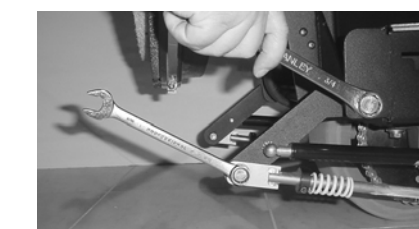
Battery Tray

Check the battery drain hose for liquid level. Dispose of according to local and federal regulations.



Machine Components

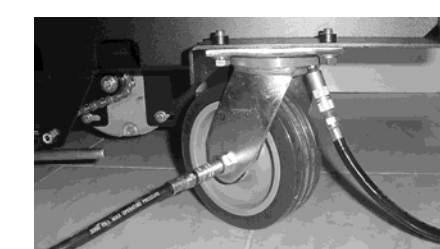
Inspect machine components for wear, loose fasteners or damage.



Quarterly Maintenance

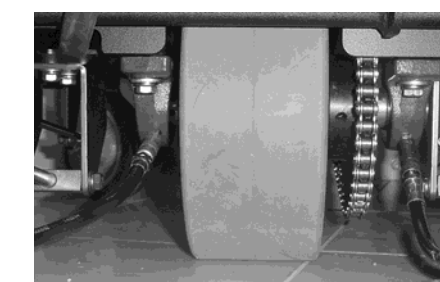
Lubricate

Lubricate caster with an industrial grade bearing grease.



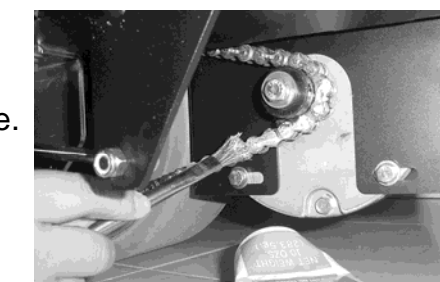
Lubricate

Lubricate drive bearings with an industrial grade bearing grease.



Lubricate

Lubricate drive chain with an industrial grade bearing grease. NEVER use your finger. Serious injury may occur. Check and tighten chain.



Lubricate

Tighten and lubricate all moving parts as needed. Pay attention to linkages and pivot points. DO NOT lubricate Gas Springs, they are self-lubricating.

